



沙河市耀泰商贸有限公司

SHAHE CITY YAOTAI TRADING CO.,LTD

ADDRESS:RM401, Dongfang Hongxing No.1 Building,
Renmin Street, Shahe City, Hebei Provnice, China

Phone:+8613482956220

E-mail:279443748@qq.com

目录 Catalogue

目录Catalogue.....	02
公司简介Business Summary.....	03
产品效果Brief introduction of products and effects	04
钢化玻璃Tempered glass.....	05
钢化玻璃Tempered glass.....	06
夹胶玻璃Laminated glass	07
镀膜玻璃Reflective glass.....	08
镀膜玻璃工程图Reflective glass.....	09
压花玻璃Patterned glass	10
镜子Mirror glass.....	11
镜子Mirror glass.....	12
原片玻璃Clear float glass.....	13
原片玻璃Clear float glass.....	14
高强度螺栓High Strength Bolt series.....	15
微标系列Micro Standard Series.....	16
钻尾丝系列Tex Screws.....	17
膨胀螺栓系列Expansion series.....	18
幕墙配件系列Curtain wall accessories series.....	19
光伏配件系列Series of photovoltaic accessories	20
预埋件系列Embedded parts series	21
支架抱箍系列Support Hoop series.....	22

- Business Summary

- SHAHE CITY YAOTAI TRADING CO.,LTD ,located in the world's "Glass City" - Shahe city, Hebei province, China, Which is near to Beijing city and Tianjin Port. , we are the leader in glass industry.has been engaged in the research,designing,supplying and shipping glass to overseas for 20years.

Our products include sheet glass, float glass, tinted glass, reflective glass, ultra clear(low iron) glass, patterned glass, aluminium mirror, silver mirror, decorative mirror, tempered glass, laminated glass, insulating glass, vacuum glass, silk screen printing glass, painting glass, acid-etched glass, glass brick and more processing composite glass products for application of building, furniture, electronics, automotive, decoration. Meanwhile, in order to satisfy needs of all the customers, we also offer services like cutting, drilling, edge polishing, beveling etc.

From 2010, we have invested in more deep processed glass products as laminated glass, tempered glass and mirror products, our experienced management, technical and marketing team assures that we can supply the high quality products complying with ISO and CE certificate.

With rich experience in glass industry and deep understanding of global market, based on the best quality, reasonable price, timely shipment and good after-sale service, our company has enjoyed high reputation.

The company specializing in glass production and export for nearly 20 years, it has rich experience in glass packaging, container loading and shipping.At present, the company has sold products to the Middle East, South America, Subcontinent, Europe, Baltic States, Africa Oceania and America more than 80 countries in the world.

In the future development, the company will forge ahead to innovate trade mode, optimize trade product structure, improve trade process efficiency, the company's annual trade scale will exceed 5 billion yuan.

YAOTAI Glass, to provide you bright, colorful and better life!YAOTAI glass would like to always supply quality products to add luster to your construction and home decoration!

We have always pursued keep improving and good service. We sincerely hope that we can build up along-time and good business relation with you on mutual benefit.

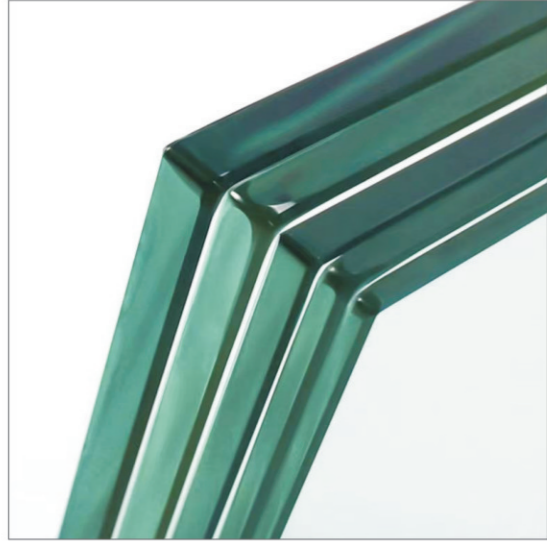


产品及效果简介

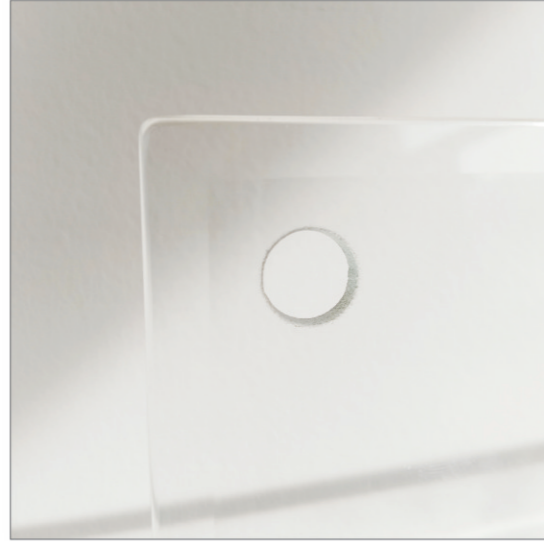
Brief introduction of products and effects



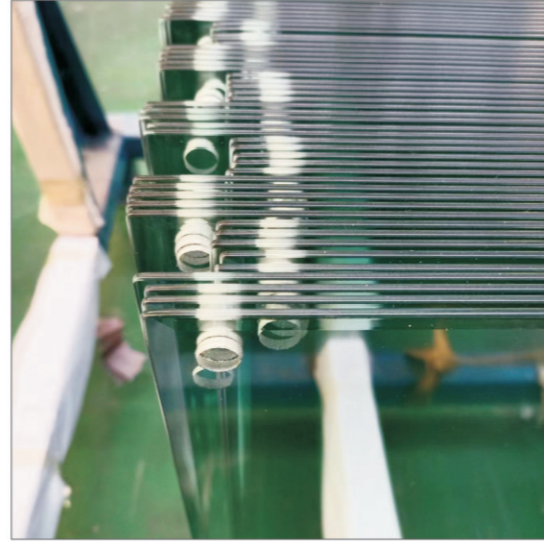
• 钢化玻璃 (Tempered glass)



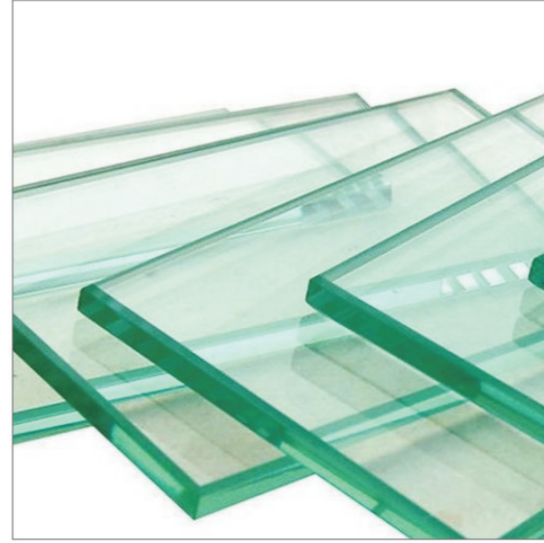
玻璃磨边(BEVEL GLASS)



钢化玻璃(Tempered glass)



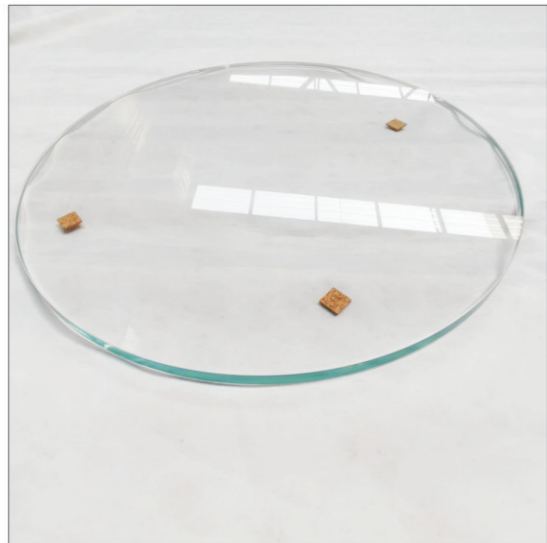
钢化玻璃1(Tempered glass)



钢化玻璃2(Tempered glass)



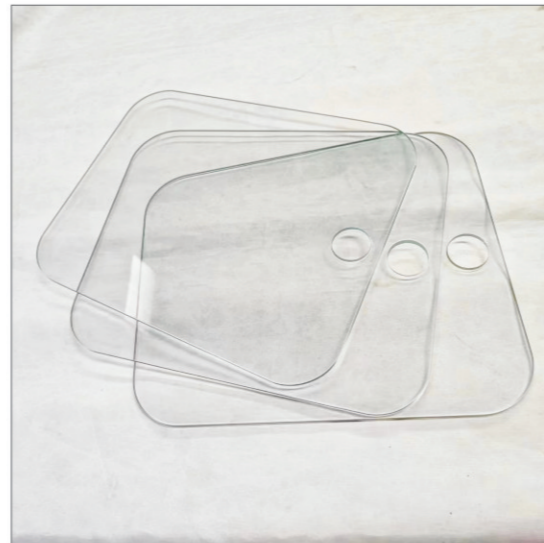
钢化玻璃3(Tempered glass)



钢化玻璃4(Tempered glass)



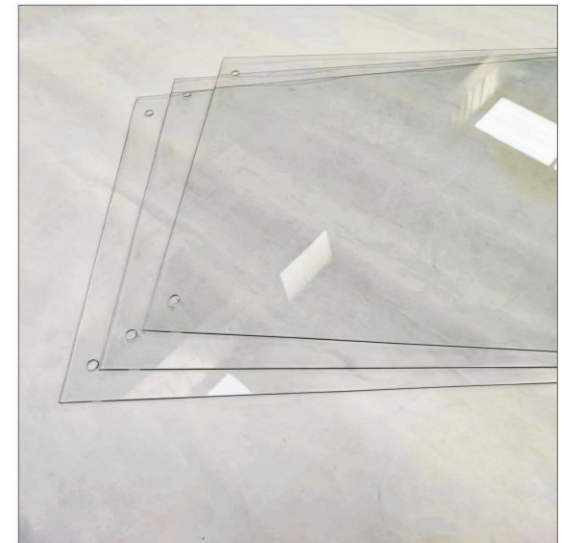
钢化玻璃5(Tempered glass)



钢化玻璃6(Tempered glass)



钢化玻璃7(Tempered glass)

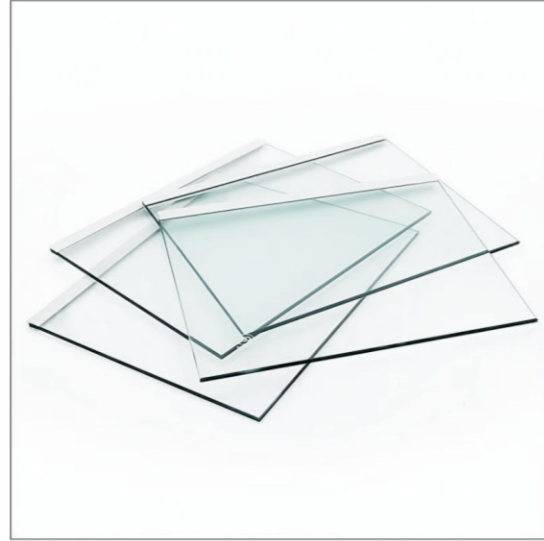


钢化玻璃8(Tempered glass)

• 钢化玻璃 (Tempered glass)



钢化玻璃9(Tempered glass)



钢化玻璃10(Tempered glass)



钢化玻璃11(Tempered glass)



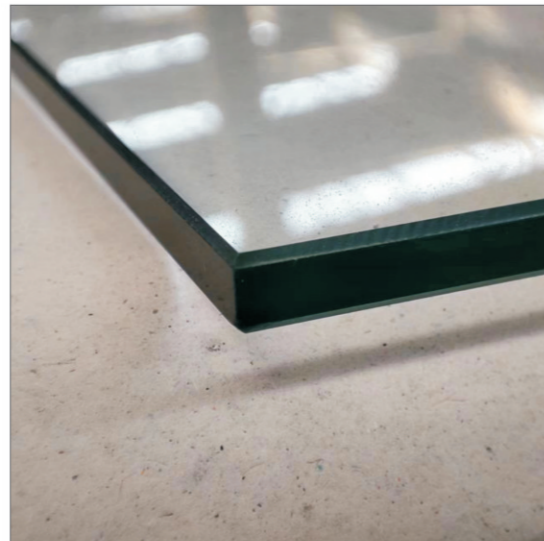
钢化浴室门(bathroom glass door)



磨边生产线(BEVEL GLASS)



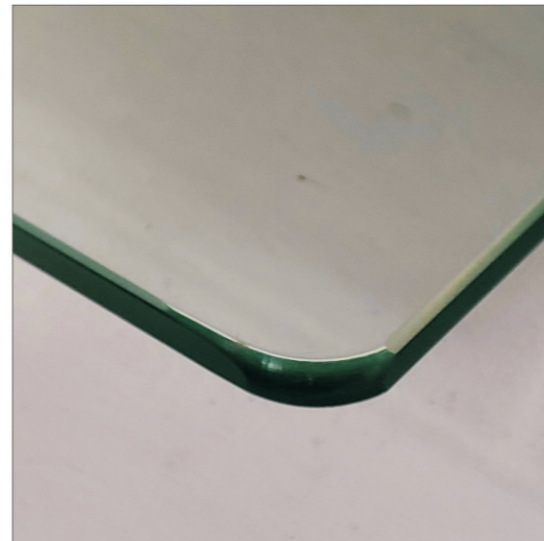
磨边图(BEVEL GLASS)



磨边图1(BEVEL GLASS)



磨边图2(BEVEL GLASS)



磨边图3(BEVEL GLASS)



浴室玻璃(bathroom glass door)

• 夹胶玻璃 (Laminated glass)



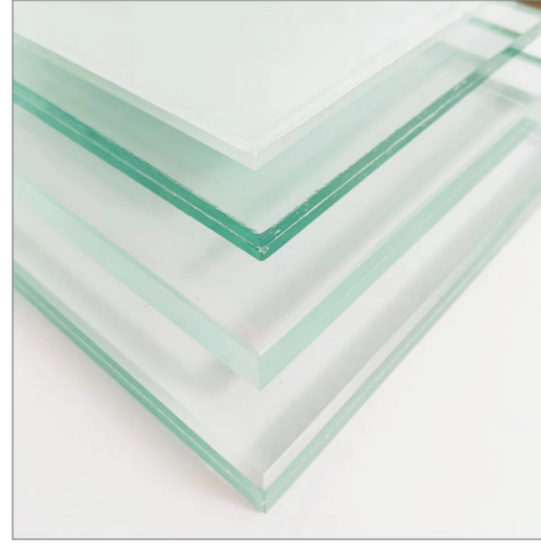
夹胶玻璃 (Laminated glass)



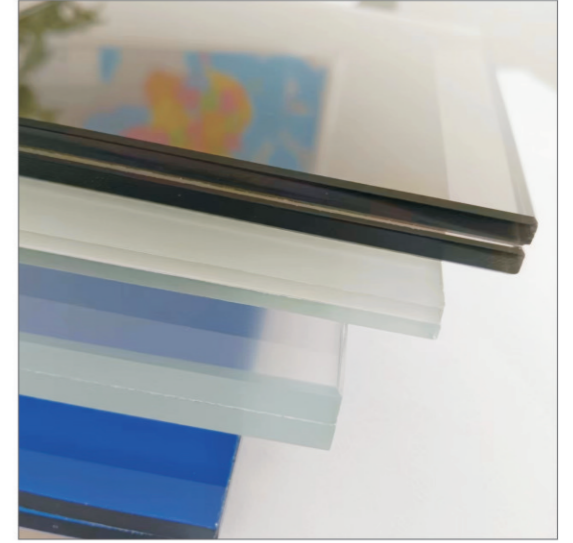
夹胶玻璃1 (Laminated glass)



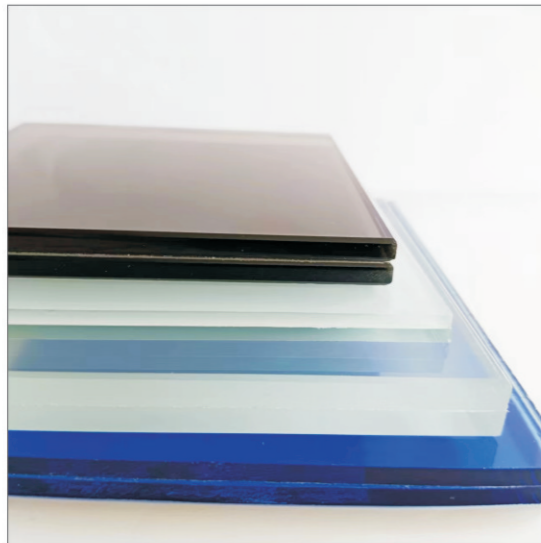
夹胶玻璃3 (Laminated glass)



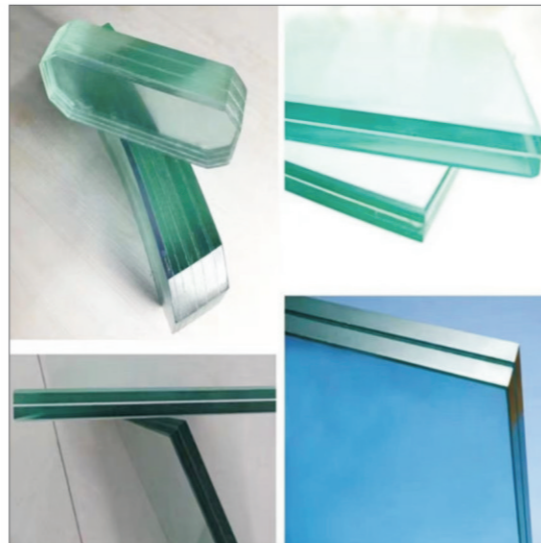
夹胶玻璃4 (Laminated glass)



夹胶玻璃5 (Laminated glass)



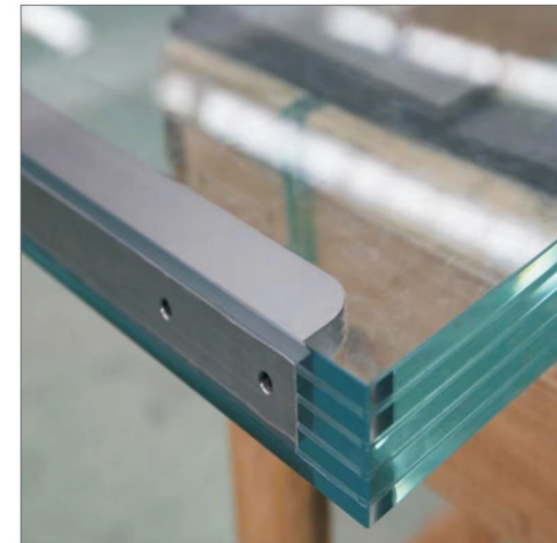
夹胶玻璃6 (Laminated glass)



夹胶玻璃7 (Laminated glass)



夹胶钢化玻璃 (Laminated glass)

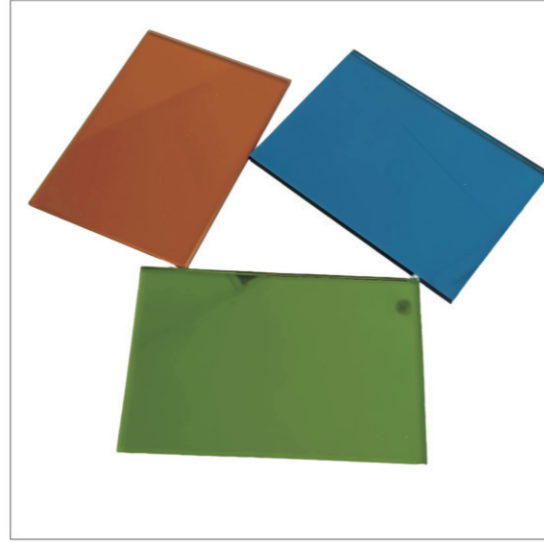


夹胶钢化玻璃1 (Laminated glass)

• 镀膜玻璃(Reflective glass)



镀膜玻璃1(Reflective glass)



镀膜玻璃2(Reflective glass)



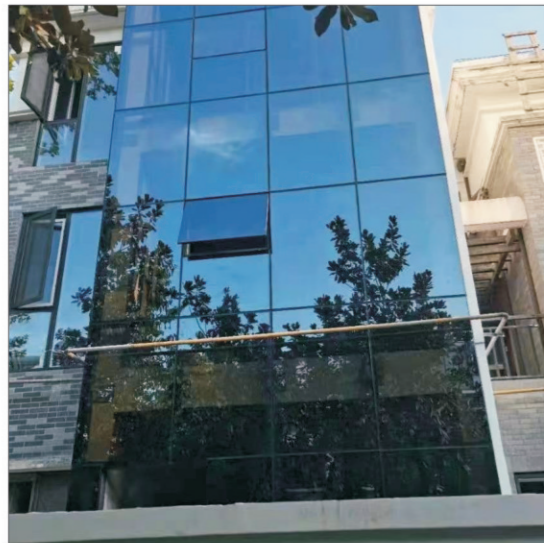
镀膜玻璃3(Reflective glass)



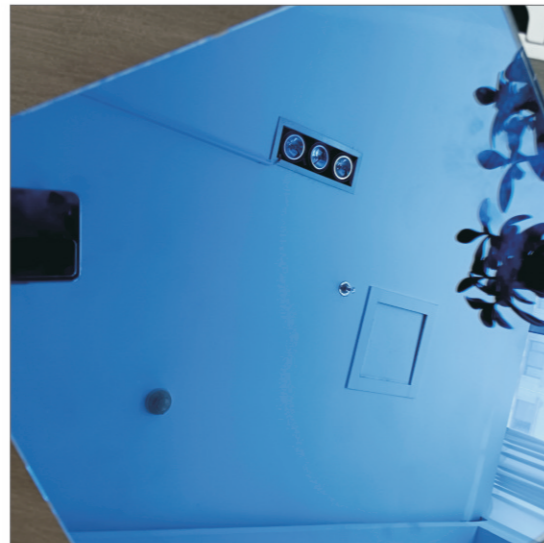
镀膜玻璃4(Reflective glass)



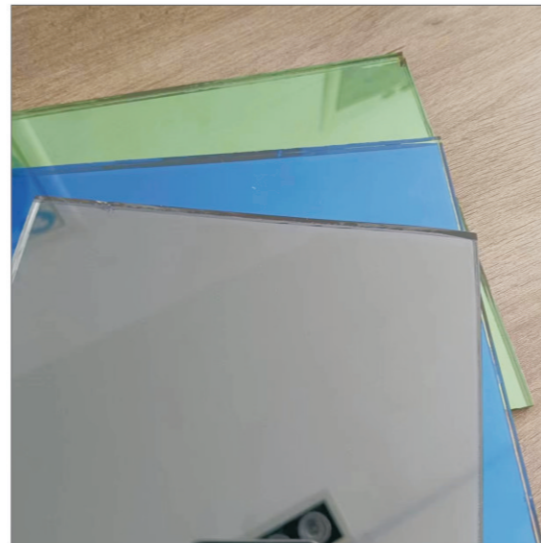
镀膜玻璃5(Reflective glass)



镀膜玻璃6(Reflective glass)



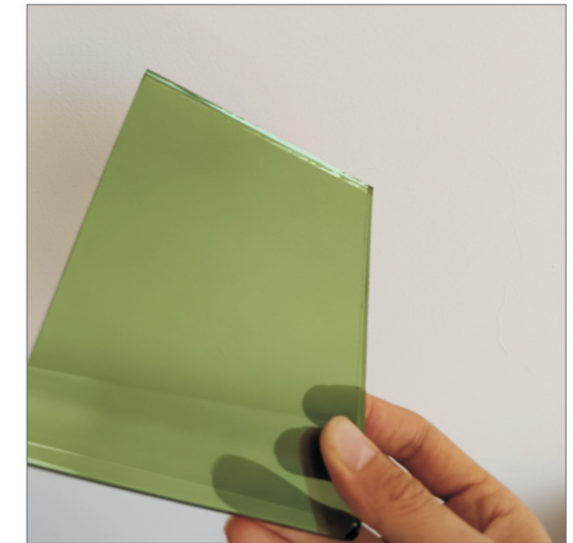
镀膜玻璃7 (Reflective glass)



镀膜玻璃8 (Reflective glass)



镀膜玻璃9 (Reflective glass)

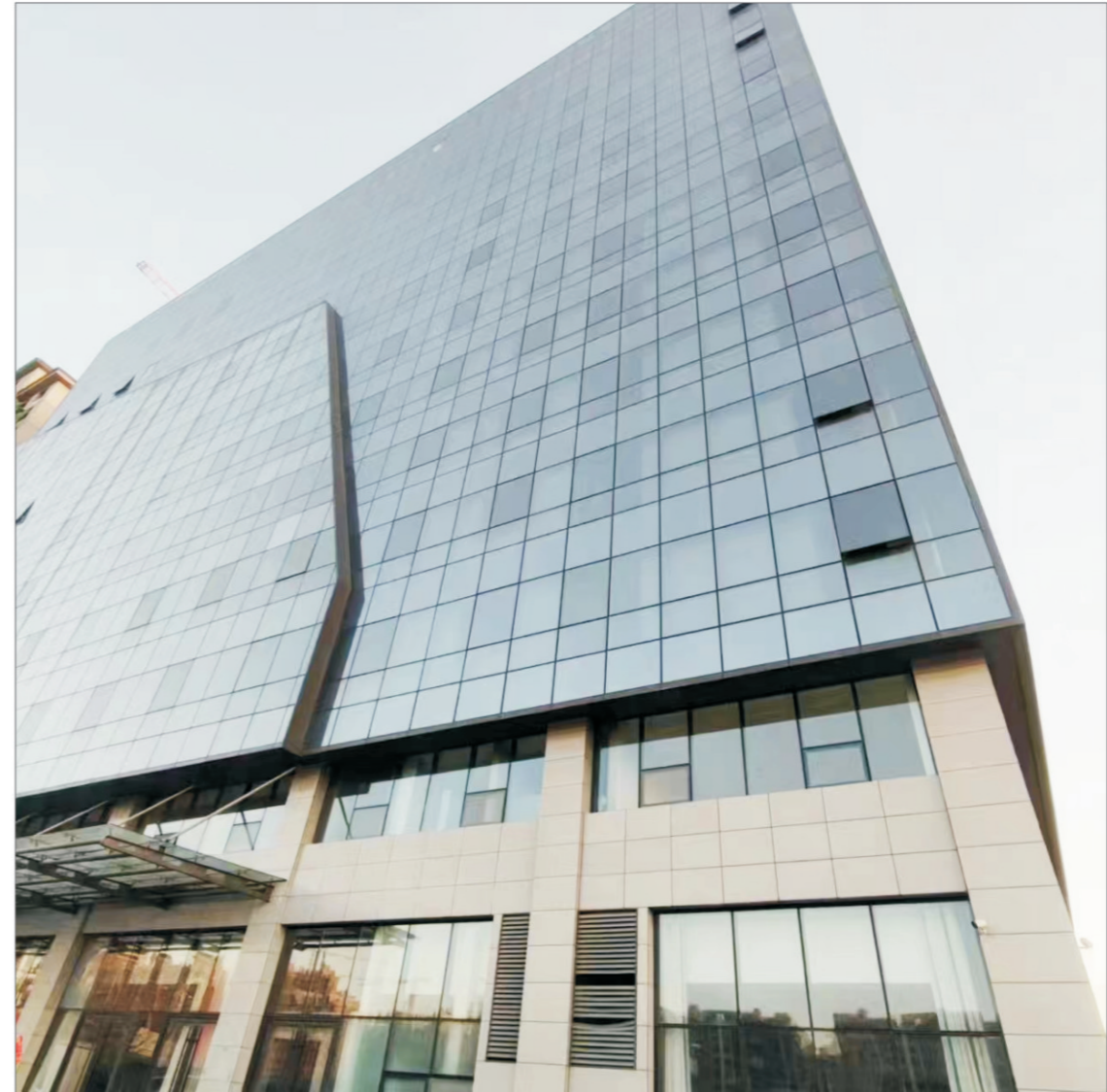


镀膜玻璃10 (Reflective glass)

- 镀膜玻璃工程图(Reflective glass)

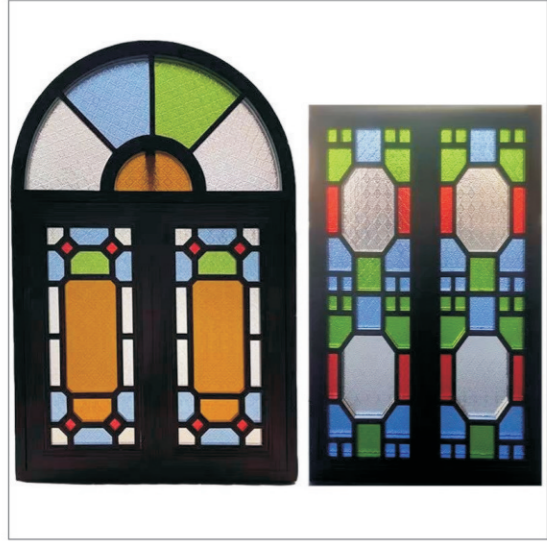


玻璃工程图(Reflective glass)



建筑玻璃工程图(Reflective glass)

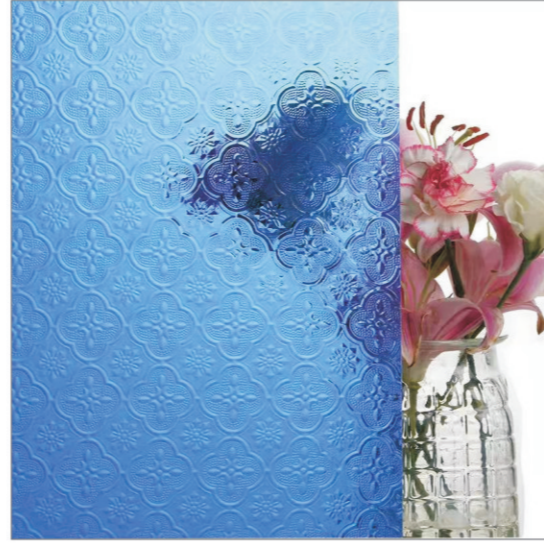
• 压花玻璃(Patterned glass)



彩色压花玻璃 (Color Pattern Glass)



彩色压花玻璃1 (Color Pattern Glass)



彩色压花玻璃2 (Color Pattern Glass)



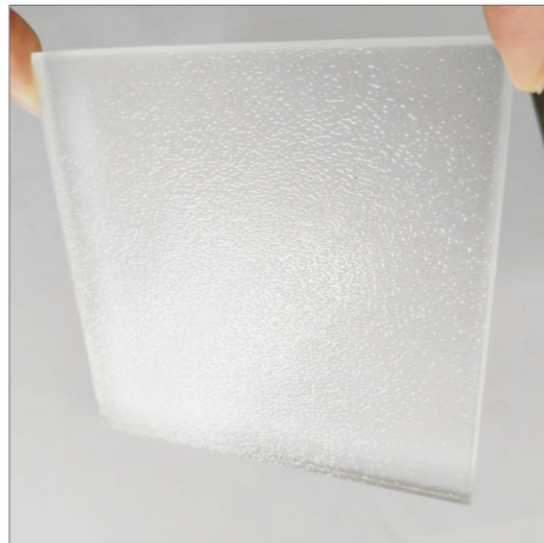
彩色压花玻璃3 (Color Pattern Glass)



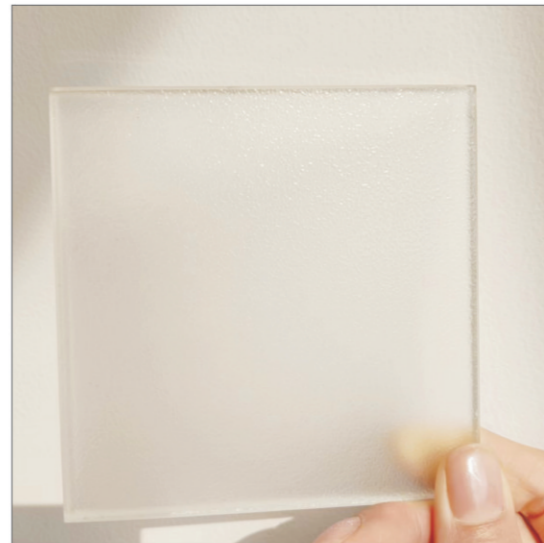
超白压花玻璃(Ultra Clear Pattern Glass)



超白压花玻璃1(Ultra Clear Pattern Glass)



超白压花玻璃2(Ultra Clear Pattern Glass)



超白压花玻璃3(Ultra Clear Pattern Glass)



超白压花玻璃4(Ultra Clear Pattern Glass)

• 镜子(Mirror glass)



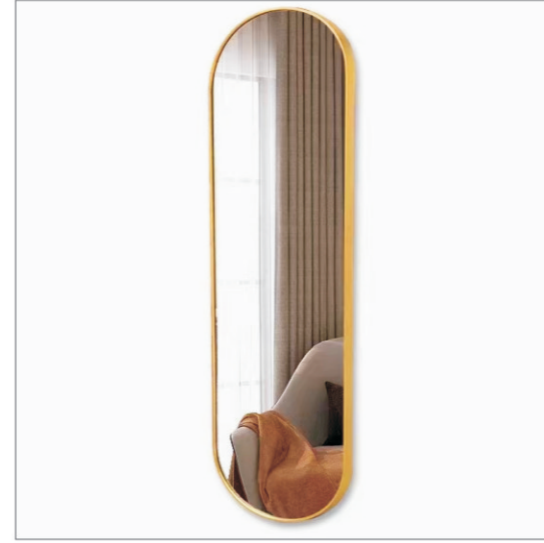
LED镜 (Bathroom mirror)



LED镜1 (Bathroom mirror)



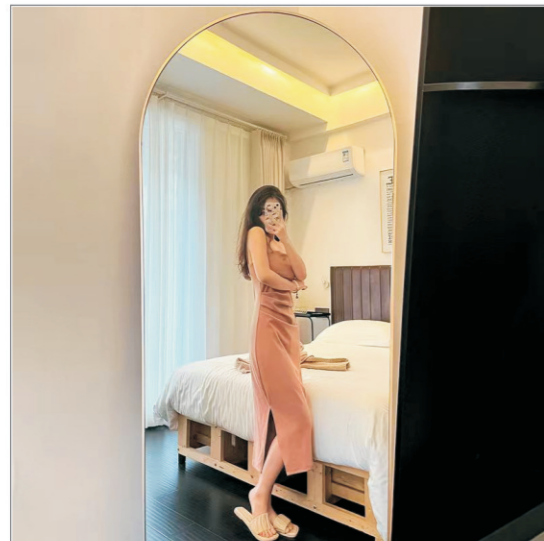
LED镜2 (Bathroom mirror)



穿衣镜(Floor mirror)



穿衣镜1(Floor mirror)



穿衣镜2(Floor mirror)



穿衣镜4(Floor mirror)



镜子3(Mirror)



镜子玻璃(Mirror)

• 镜子(Mirror glass)



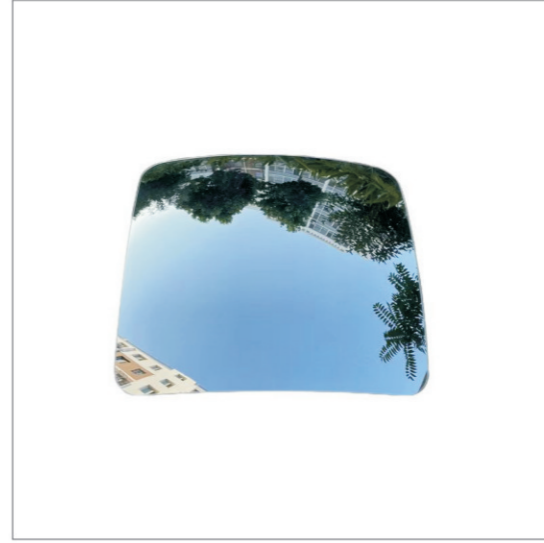
镜子玻璃1(Mirror)



镜子库房1(Mirror)



汽车后视镜 (Rearview mirror)



汽车后视镜1 (Rearview mirror)



汽车后视镜2 (Rearview mirror)



浴室镜 (Bathroom mirror)



浴室镜1 (Bathroom mirror)



浴室镜3 (Bathroom mirror)

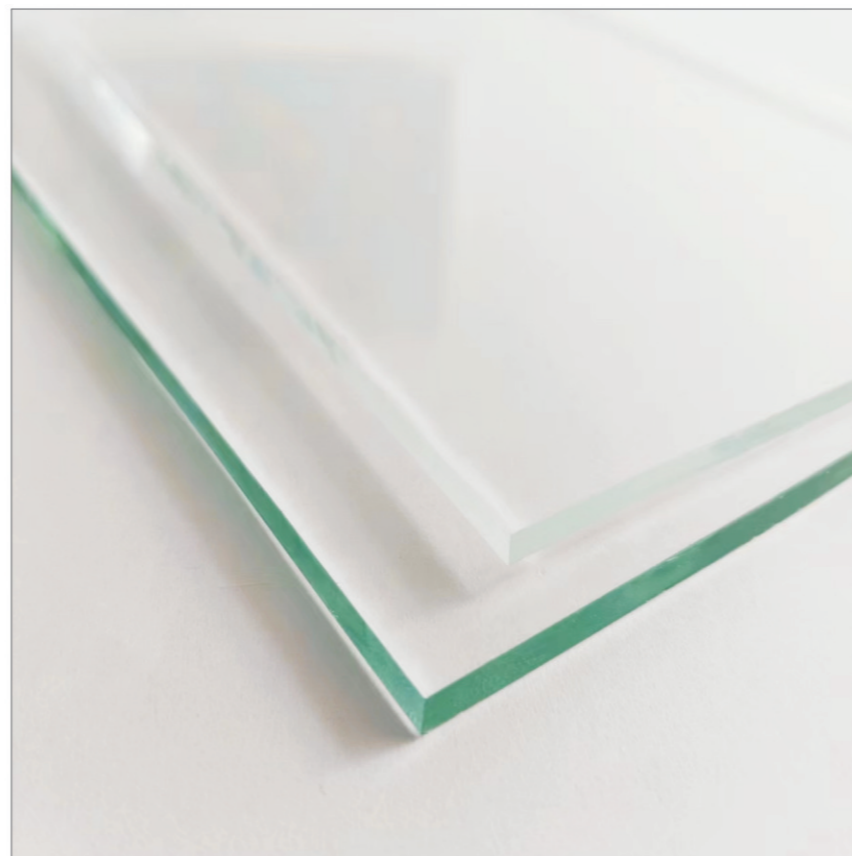


转角镜(Traffic mirror)

- 原片玻璃 (Clear float glass)



超白玻璃 (Ultra Clear)



超白玻璃1 (Ultra Clear)



超白玻璃2 (Ultra Clear)

• 原片玻璃 (Clear float glass)



浮法玻璃1 (Clear float glass)



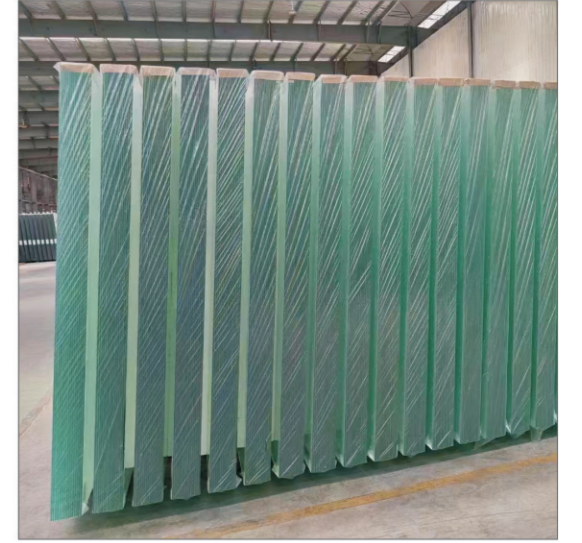
浮法玻璃库房 (Clear float glass)



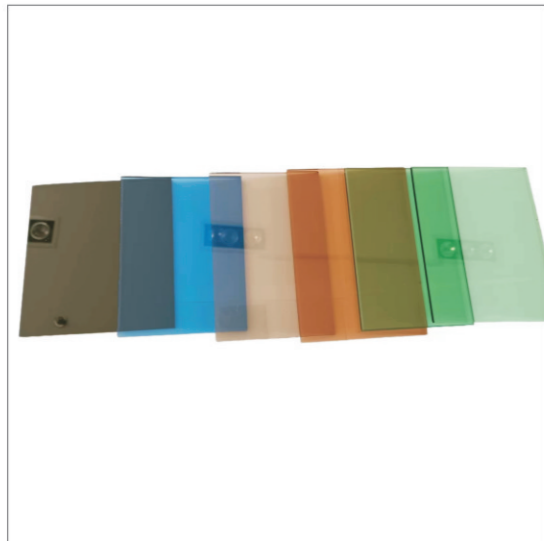
透明浮法玻璃 (Clear float glass)



透明浮法玻璃 (Clear float glass)1



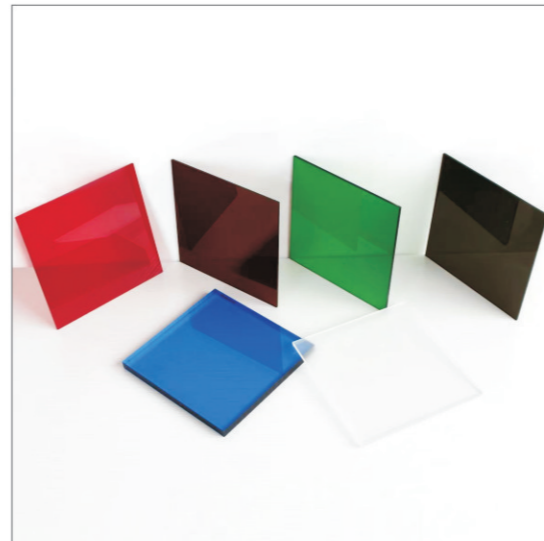
透明浮法玻璃 (Clear float glass)2



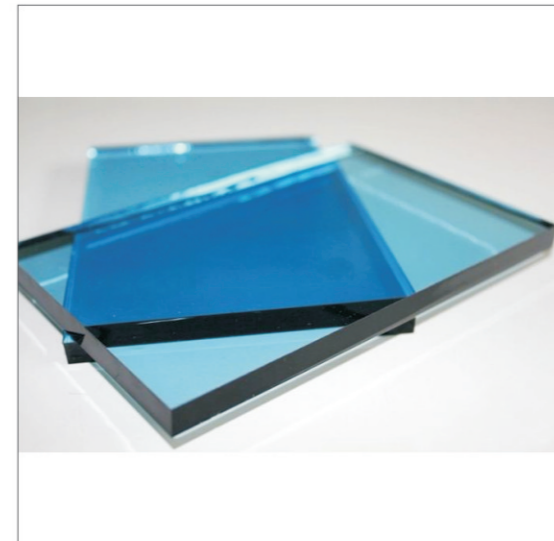
有色浮法玻璃 (colored glass)



有色浮法玻璃1 (colored glass)



有色浮法玻璃2 (colored glass)



有色浮法玻璃3 (colored glass)

• 高强度螺栓系列(High Strength Bolt series)



外六角螺栓(Hex Bolt)



内六角螺栓(Hex Socket Bolts)



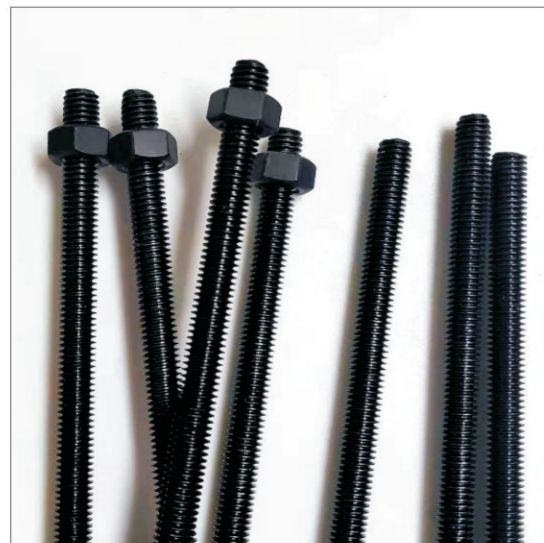
高强度双头 (High strength double head)



扭剪型螺栓 (Torque Shear strength Bolt)



大六角螺栓 (Large Hexagon Bolt)



高强度牙条 (High Strength Fully Threaded Rod)



焊钉 (Welding nail)



高强平垫 (High Strength Flat Washer)



高强弹垫(Steel Lock Washer)

• 微标系列(Micro Standard Series)



盘头十字螺栓(Cross bolts with pan head)



沉头十字螺栓(Countersunk cross bolts)



自攻钉(Self tapping nails)



法兰十字螺栓(Flanged cross bolts)



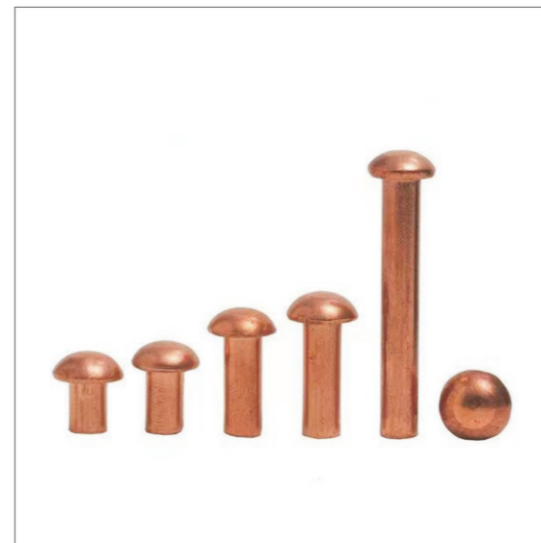
钻尾丝(Tek Screw)



紧定螺丝 (Allen Grub Screw)



木螺丝 (Wood screws)



铆钉 (Rivets)

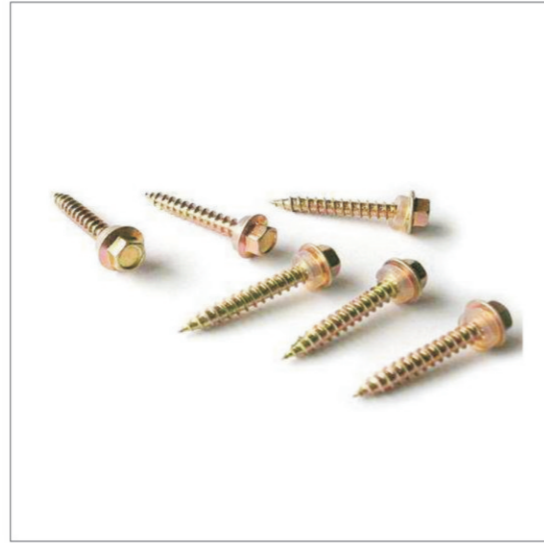


抽芯铆钉(Blind Rivets)

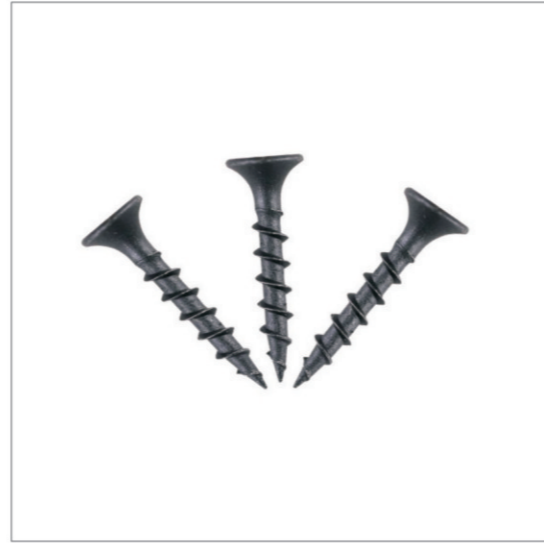
• 钻尾丝系列(Tex Screws)



盘头钻尾丝(Self Drilling Screws)



六角木钻尾(Hex wood Screw)



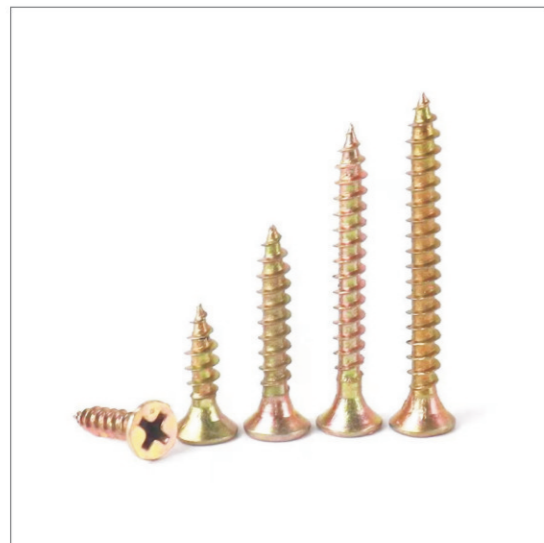
粗牙干壁钉(Dry Wall Screw)



尼龙头钻尾(Nylon Head self Screw)



圆头华司自攻钉(Self Drilling Screws)



高强纤维板钉 (High strength Screws)



沉头十字钻尾丝 (Dovetail Screws)



拉铆钉 (Blind Rivets)



沉头钻尾丝(Dovetail Screws)

• 膨胀系列(Expansion series)



膨胀螺丝(Expansion Bolt)



内膨胀螺丝(InNER Expansion Bolt)



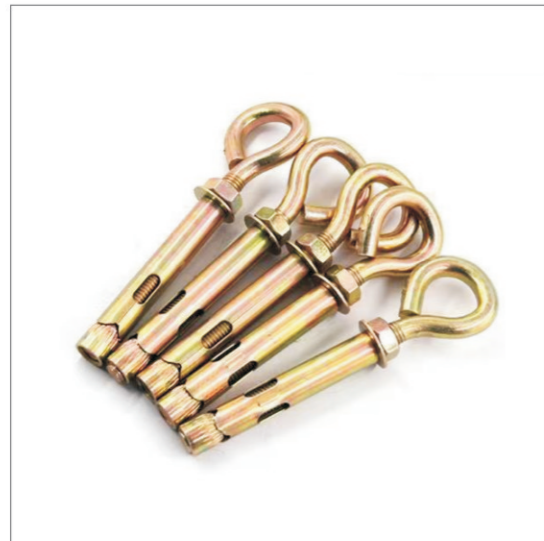
膨胀钩螺丝(Expansion hook Bolt)



机械锚栓(Mechanical anchor bolts)



中空壁虎膨胀(Hollow Drive Wall Anchor)



羊眼圈膨胀 (Closed hook Anchor Bolts)



塑料膨胀塞 (Plastic expansion Bolt)



内爆 (Drop In Anchor Bolt)



拉爆(Pop)

• 幕墙配件系列 (Curtain wall accessories series)



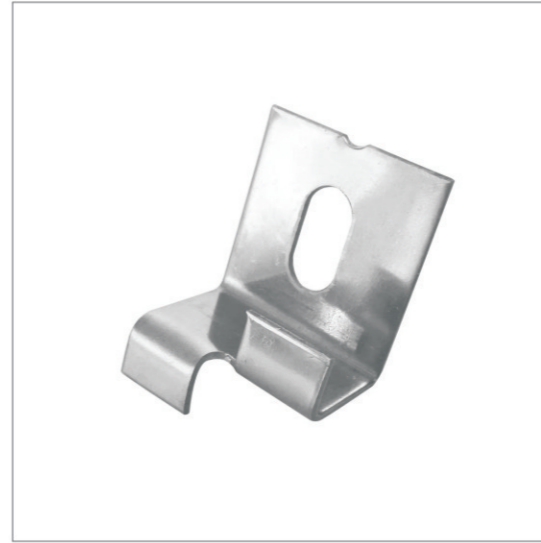
挂件螺丝(Bolt Nut)



角码(Corner Angle)



化学锚栓(Chemical anchors) 双弯角码(Double Corner Angle)



挑件(Marble Angle)



平板(Tablets)



双钩(Double Hook)



T型焊挂(T-type welding hangers) 幕墙螺丝(Curtain wall screws)



• 光伏配件系列 (Series of photovoltaic accessories)



边压 (Side pressure)



直立夹具 (Vertical fixture)



中压组件 (Medium voltage components)



梯形夹具 (Trapezoidal fixture)



光伏挂钩 (Photovoltaic hooks)



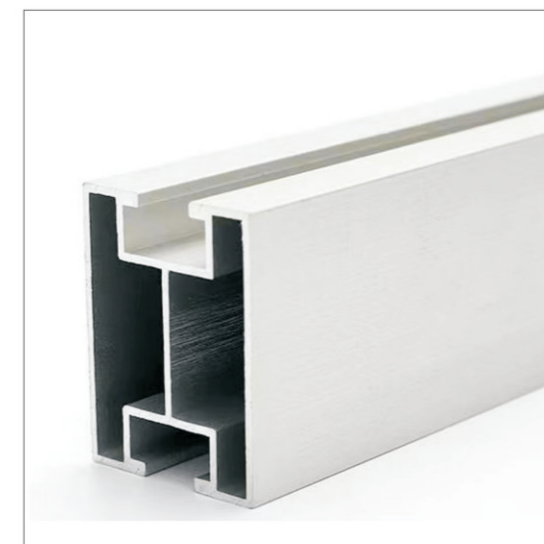
一体夹具 (One-piece fixture)



光伏专业压板 (Photovoltaic professional pressure plate)



C型钢 (C-section steel)



铝合金轨道 (Aluminum alloy track)

• 预埋件系列 (Embedded parts series)



7字地脚螺栓 (Type L Anchor Bolt)



9字地脚螺栓 (Type JA Anchor Bolt)



焊接地脚 (Welding Type Anchor Bolt)



焊接预埋件 (Welding embedded parts)



预埋钢板 (Embedded steel plate)



预埋方U型丝 (Embedded Square U-shaped wire)



焊接预埋件 (Welding embedded parts)

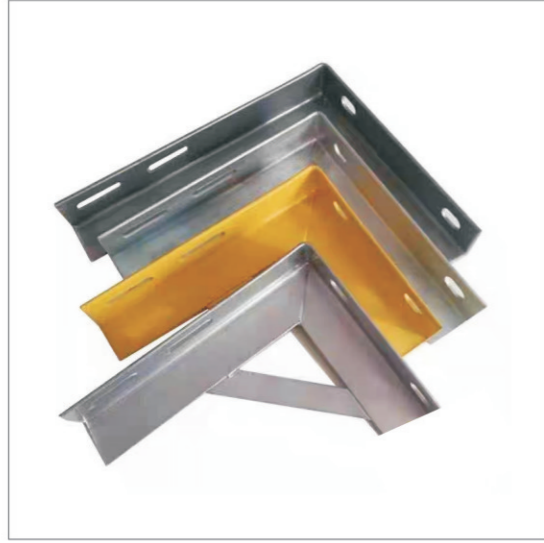


焊接预埋件 (Welding embedded parts)



焊接预埋件 (Welding embedded parts)

• 支架 抱箍系列(Support, Hoop series)



天然气支架(Brackets)



避雷卡(Lightning protection Anchor)



电力电缆支架(Power cable bracket)



不锈钢抱箍(Stainless steel Hose Clamp)



管箍(Pipe Clamp)



马鞍卡 (Pipe U Shape Clamp)



扁铁抱箍 (Clamp Fittings)



托臂 (Clamp Support)



托臂 (Clamp Support)